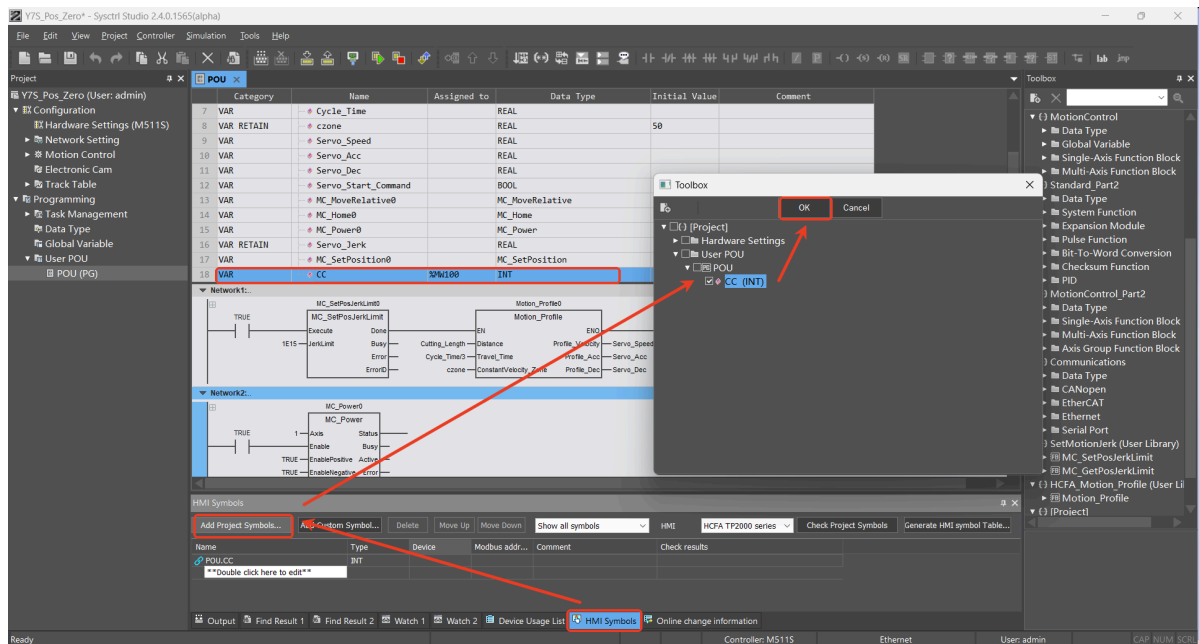


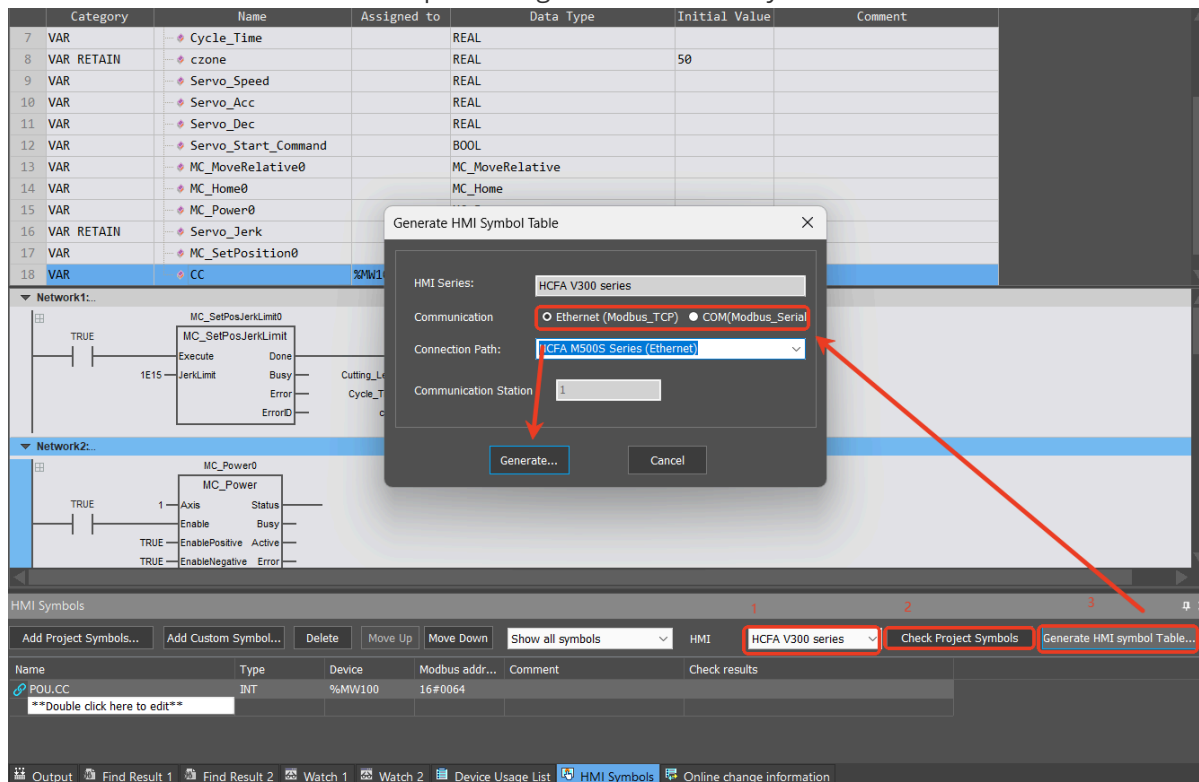
# M series HMI table

## PLC export process

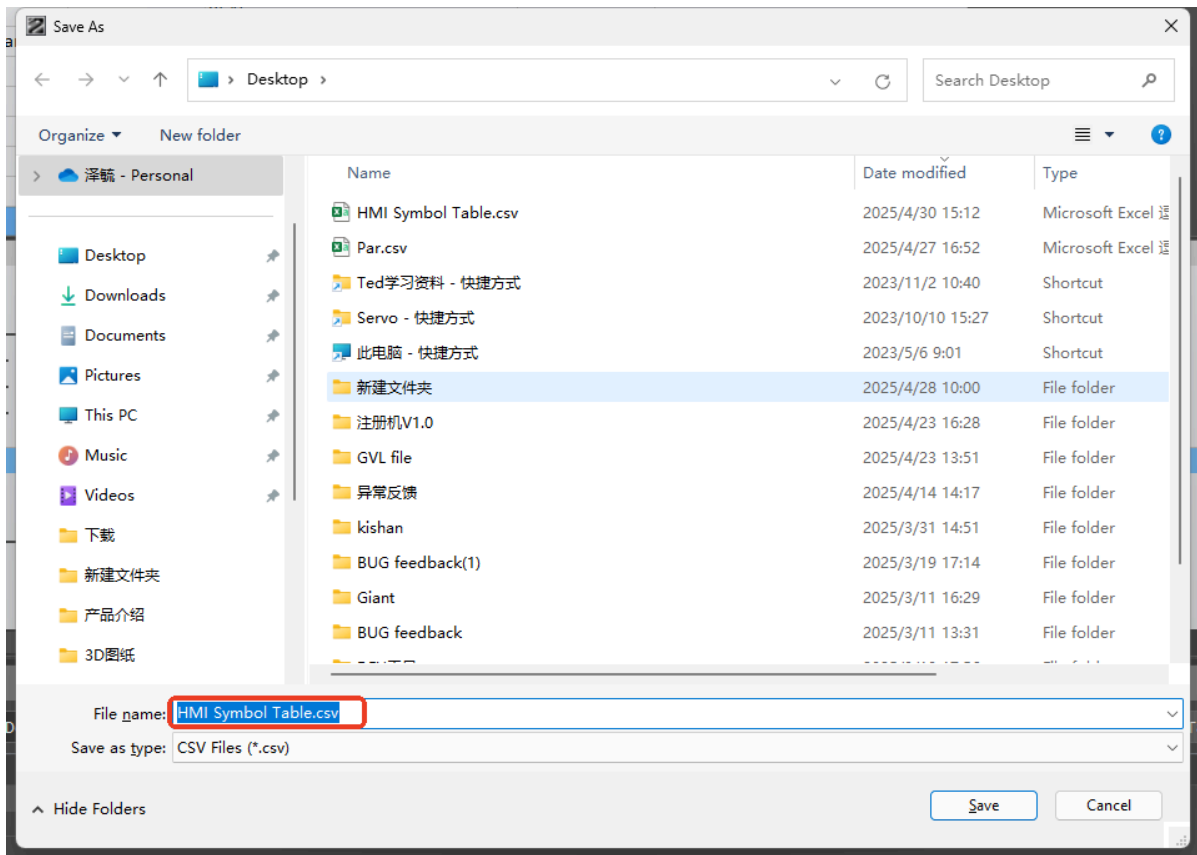
1.Create variable and assign the address, click the HMI symbols



2.Choose the HMI series then compile then generate the HMI symbol table

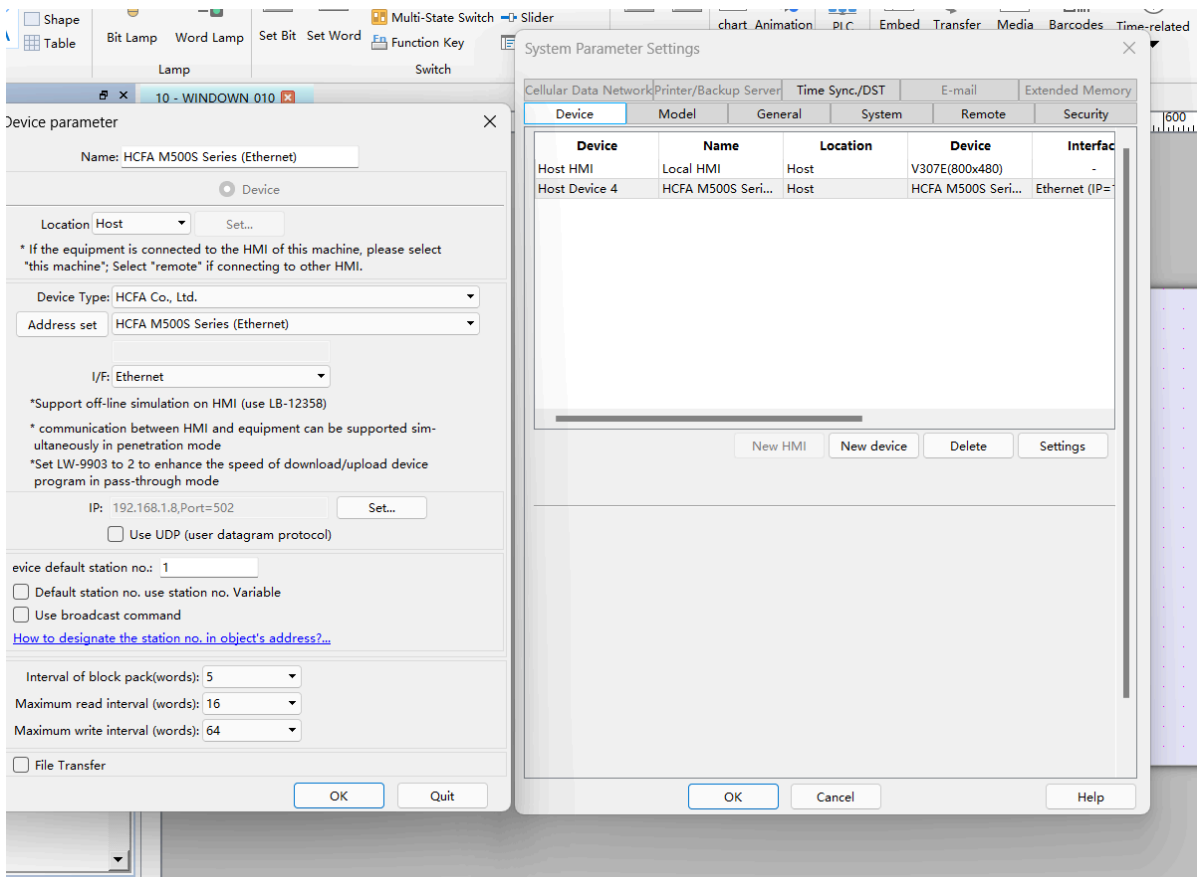


3.Select the path to save the table

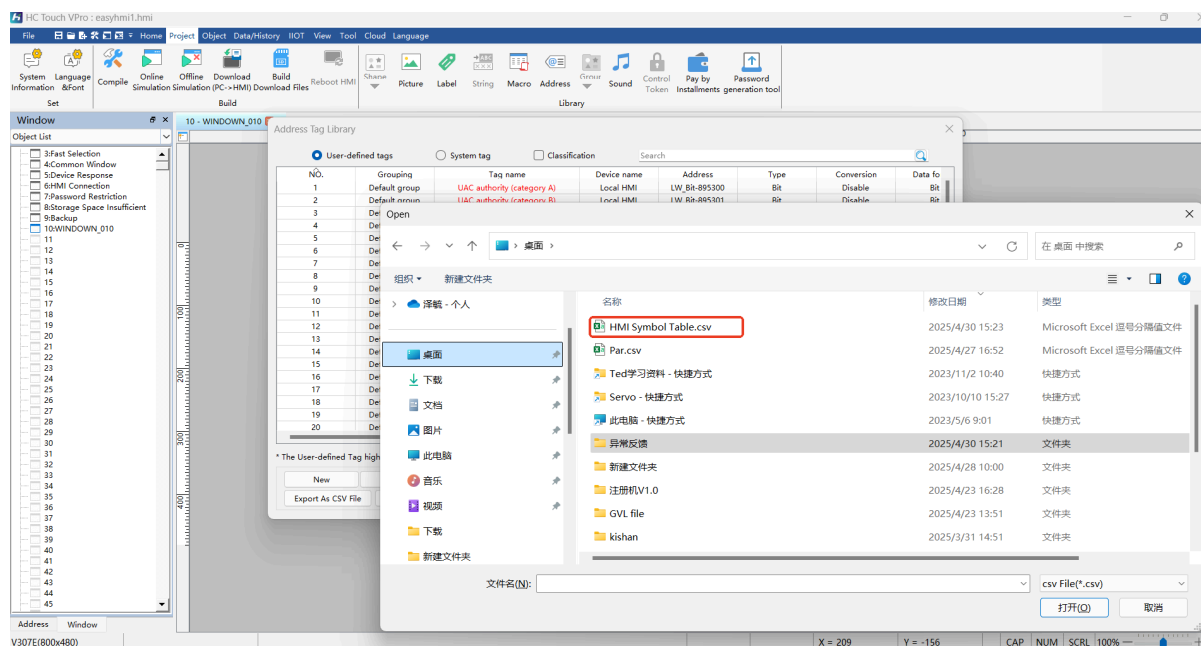
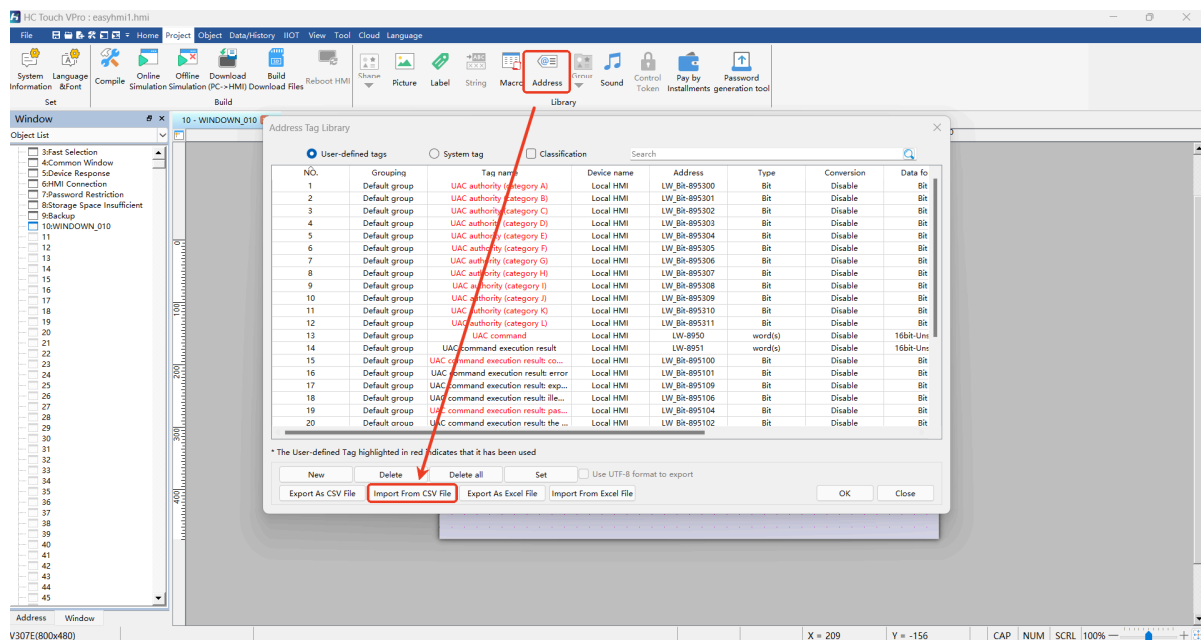


## HMI import

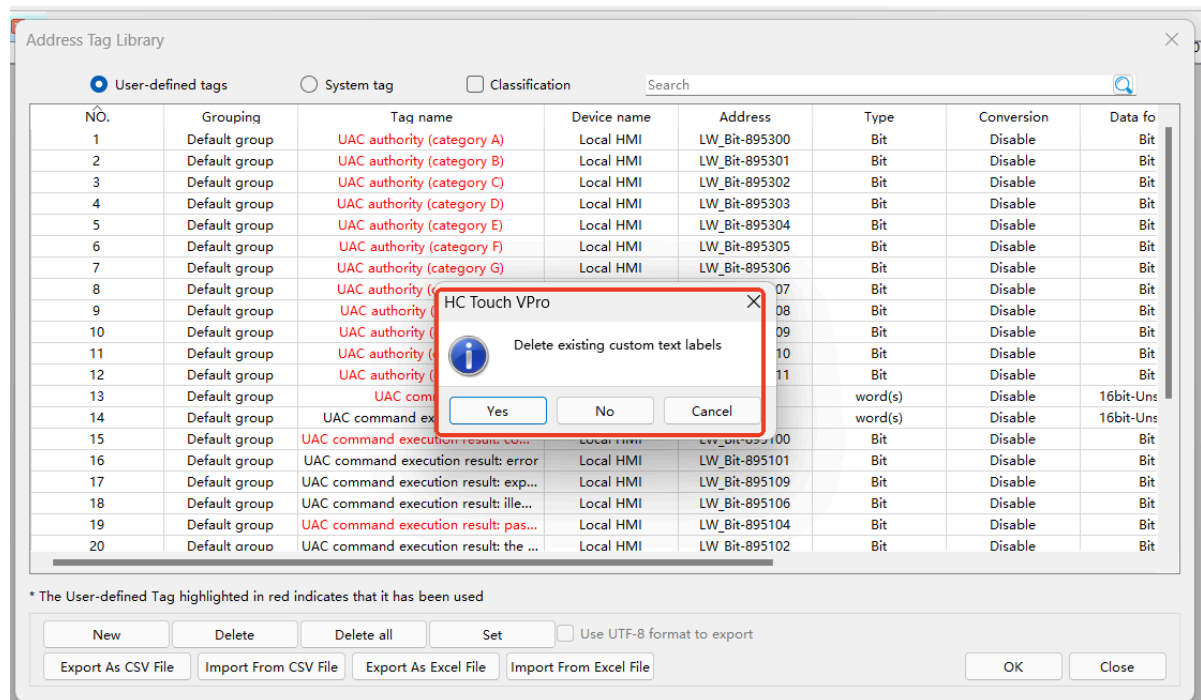
### 1.device setting



### 2.Address Import:



3.After import you can choose to delete or keep the current variable



#### 4. Newly added tag can be checked

Address Tag Library

☒ User-defined tags ☐ System tag ☐ Classification

NO.	Grouping	Tag name	Device name	Address	Type	Conversion	Data fo
1	Default group	POU_CC	HCFA M500S Seri...	MW-100	word(s)	Disable	16bit-Si
2	Default group	POU_aa	HCFA M500S Seri...	MW-120	word(s)	Disable	32bit-Si
3	Default group	UAC authority (category A)	Local HMI	LW_Bit-895300	Bit	Disable	Bit
4	Default group	UAC authority (category B)	Local HMI	LW_Bit-895301	Bit	Disable	Bit
5	Default group	UAC authority (category C)	Local HMI	LW_Bit-895302	Bit	Disable	Bit
6	Default group	UAC authority (category D)	Local HMI	LW_Bit-895303	Bit	Disable	Bit
7	Default group	UAC authority (category E)	Local HMI	LW_Bit-895304	Bit	Disable	Bit
8	Default group	UAC authority (category F)	Local HMI	LW_Bit-895305	Bit	Disable	Bit
9	Default group	UAC authority (category G)	Local HMI	LW_Bit-895306	Bit	Disable	Bit
10	Default group	UAC authority (category H)	Local HMI	LW_Bit-895307	Bit	Disable	Bit
11	Default group	UAC authority (category I)	Local HMI	LW_Bit-895308	Bit	Disable	Bit
12	Default group	UAC authority (category J)	Local HMI	LW_Bit-895309	Bit	Disable	Bit
13	Default group	UAC authority (category K)	Local HMI	LW_Bit-895310	Bit	Disable	Bit
14	Default group	UAC authority (category L)	Local HMI	LW_Bit-895311	Bit	Disable	Bit
15	Default group	UAC command	Local HMI	LW-8950	word(s)	Disable	16bit-Uns
16	Default group	UAC command execution result	Local HMI	LW-8951	word(s)	Disable	16bit-Uns
17	Default group	UAC command execution result: co...	Local HMI	LW_Bit-895100	Bit	Disable	Bit
18	Default group	UAC command execution result: error	Local HMI	LW_Bit-895101	Bit	Disable	Bit
19	Default group	UAC command execution result: exp...	Local HMI	LW_Bit-895109	Bit	Disable	Bit
20	Default group	UAC command execution result: ille...	Local HMI	LW_Bit-895106	Bit	Disable	Bit

\* The User-defined Tag highlighted in red indicates that it has been used

New Delete Delete all Set ☐ Use UTF-8 format to export

Export As CSV File Import From CSV File Export As Excel File Import From Excel File OK Close

#### 5. How to use the tag:

HC Touch VPro: easy.html.htm

File Edit View Object Data/History HMI View Tool Cloud Language

Draw Bit Lamp Word Lamp Set Bit Set Word Switch Numeric SCPI chart Animation PLC Control Embed Transfer Media Barcodes Time-related Action Trigger File Management Contacts Editor File Browser Others

Window Object List

New Numeric Object

General Format Data Entry Label security Picture

Comment:

☒ Allow input ☐ Read/Write use different addresses

Read/write address

Device: Local HMI

Address: LW 0

Setting...

Address

Device: HCFA M500S Series (Ethernet)

Address type: IB

Address 0 ☐ System tags ☐ User-defined tags

Address Format 0000-127

☐ Index register

To make calculation or arithmetic operations, use an user-defined tag with conversion definition

Tag Library...

Notification on invalid input

☐ Enable

OK Cancel Help

Address Tag Library

☒ User-defined tags ☐ System tag ☐ Classification

NO.	Grouping	Tag name	Device name	Address	Type	Conversion	Data form
1	Default group	POU_CC	HCFA M500S Seri...	MW-100	word(s)	Disable	16bit-Si
2	Default group	POU_aa	HCFA M500S Seri...	MW-120	word(s)	Disable	32bit-Si

\* The User-defined Tag highlighted in red indicates that it has been used

New Delete Delete all Set ☐ Use UTF-8 format to export

Export As CSV File Import From CSV File Export As Excel File Import From Excel File OK Close

Address Window

V307E(800x480)

X = 57 Y = -152 CAP NUM SCRL 100%